

Lumisky

your personal light designer

- (Fr) NOTICE D'UTILISATION
- (En) USER GUIDE
- (Es) MANUAL DE INSTRUCCIONES
- (De) BETRIEBSANLEITUNG
- (NI) HANDLEIDING
- (It) MANUALE D'USO
- (Pt) MANUAL DE INSTRUÇÕES
- (Ro) MANUAL DE UTILIZARE
- (Sk) NÁVOD NA POUŽITIE
- (Pl) INSTRUKCJA OBSŁUGI
- (SI) PRIRUCNIK
- (Hu) KEZELÉSI ÚTMUTAT
- (Cs) NÁVOD K POUŽITÍ
- (Ru) инструкцию
- (UK) ІНСТРУКЦІЯ З ЕКСПЛУАТАЦІЇ
- (Bg) наръчник
- (Sv) BRUKSANVISNING
- (No) BRUKSANVISNING
- (Da) BRUGSANVISNING
- (Fi) KÄYTTÖOHJEET
- (Is) LEIÐBEININGAR
- (El) ΟΔΗΓΙΕΣ ΛΕΙΤΟΥΡΓΙΑΣ
- (Tr) KULLANIM KILAVUZU
- (Ar) لي غشت لآ تامي لع ت

www.lumisky.com



Ne pas utiliser ce produit avant d'en avoir bien lu le mode d'emploi
Do not use the equipment until you have read this user guide
No utilizar este producto sin leer antes estas instrucciones
Benutzen Sie das Gerät nicht, ohne die Betriebsanleitung gelesen zu haben
Dit product niet te gebruiken zonder het lezen van de handleiding
Non utilizzare il prodotto senza aver letto le istruzioni per l'uso
Só deve utilizar este produto depois de ler estas instruções
Nu folositi acest produs inainte de a citi acest manual de utilizare
Nepoužívajte tento produkt bez prečítania návodu
Nie używaj tego produktu bez czytania instrukcji
Tega izdelka ne uporabljajte brez branja navodil
Ne használja ezt a terméket anélkül, hogy elolvasta a használati útmutatót
Nepoužívejte tento produkt bez přečtení uživatelskou příručky
Не используйте этот продукт, не читая инструкцию
Не використовуйте цей продукт, не читаючи інструкцію
Да не се използва този продукт без да четете инструкцията за употреба
Använd inte denna produkt utan att läsa instruktionsboken
Ikke bruk dette produktet uten å lese bruksanvisningen
Brug ikke dette produkt uden at læse brugermanualen
Älä käytä tätä tuotetta lukematta käyttöoppaasta
Ekki nota þessa vöru án þess að lesa handbók
μην χρησιμοποιείτε αυτό το προϊόν χωρίς να διαβάσετε το εγχειρίδιο χρήσης
Kullanim kılavuzunu okumadan bu ürünün kullanmayın
مستخدمت ال لمدى لدماء نود جتم ال اذه مدمت ال



Le degré de protection IP68 est perdu lorsque les produits sont ouverts
The IP68 protection indice is lost when the products are open

Débrancher la lampe avant toute manipulation

Disconnect the lamp before any manipulation

Desconectar la lampara de la luz antes de manipularla

Vor dem Öffnen des Gerätes Netzstecker aus der Steckdose ziehen

Koppel de lamp voordat enige manipulatie

Staccare la lampada prima di ogni utilizzo

Desligue a lâmpada antes de manusear

Deconectați lampa înainte de manipulare

- (Fr) Ne pas utiliser le produit si le câble est défectueux ou endommagé
Ne pas utiliser le produit si l'isolant est endommagé
Ne pas placer près de sources de chaleur de plus de 60 °C
Ne pas immerger dans l'eau, à l'exception de BOBBY C40,C50,C60 et LIBERTY
Tenir hors de portée des enfants
Ne pas dépasser le voltage autorisé
Conserver ce mode d'emploi pour de futures utilisations
Voltage de produits : 220 V - 240 V ; fréquence : 50/60 Hz
- (En) Do not use if the cable is damaged
Do not use in case of breakage
Do not place near heat sources above 60 °C
Do not immerse into the water, except the models BOBBY C40,C50,C60 and LIBERTY
Keep out of the reach of children
Use only within the limits of allowable voltage
Save these instructions for future use
Product voltage : 220 V - 240 V ; frequency: 50/60 Hz
- (Es) No usar en caso de cable danado
No usar en case de rotura de la envolvente
No colocar junto a fuentes de calor superiores a 60 °C
No sumergir en agua, excepto modelos BOBBY C40,C50,C60 et LIBERTY
Llevar lejos del alcance de los niños
Utilizar solo dentro de los límites de voltaje permitido
Guardar estas instrucciones para utilizaciones futuras
Voltage de productos : 220 V - 240 V ; frecuencia: 50/60 Hz
- (De) Nicht verwenden, wenn das Kabel defekt oder beschädigt ist
Sie nicht, wenn beschädigte Isolierung verwenden
Nicht in der Nähe von Wärmequellen über 60 °C
Tauchen oder nässen Sie die Produkte nicht in Wasser
Vor Kindern bewahren
Überschreiten Sie die maximal Spannung
Bewahren Sie diese Anleitung für den späteren Gebrauch
Spannungsprodukte : 220 V - 240 V ; Frequenzumrichter: 50/60 Hz
- (NI) Niet gebruiken als de kabel defect is of beschadigd
Niet gebruiken indien beschadigd isolatiemateriaal
Niet in de buurt van warmtebronnen boven de 60 °C
Niet onderdompelen in water
Buiten bereik van kinderen houden
Neem niet meer dan de toegestane spanning
Bewaar deze handleiding voor toekomstig gebruik
Voltage producten : 220 V - 240 V ; frequentie: 50/60 Hz

- (It) Non usare questo prodotto se il cavo è difettoso o danneggiato
Non usare questo prodotto se l'isolante è danneggiato
Non posizionare vicino a fonti di calore oltre i 60 °C
Non immergere in acqua ad eccezione di BOBBY C40,C50,C60 et LIBERTY
Tenere fuori dalla portata dei bambini
Non superare il voltaggio
Conservare questo manuale per usi futuri
Voltaggio dei prodotti: 220 V - 240 V ; Frequenza: 50/60 Hz
- (Pt) Não use se o cabo está com defeito ou danificado
Não use se o isolamento danificado
Não coloque perto de fontes de calor de mais de 60 °C
Não submergir o producto em agua, a excepção dos modelos BOBBY C40,C50,C60 et LIBERTY
Não guardar ao alcance das crianças
Use somente dentro dos limites de tensão permitida
Guarde estas instruções para uso futuro
Tensão de produtos : 220 V - 240 V ; frequência: 50/60 Hz
- (Ro) Nu utilizați produsul în cazul în care cablul este defect sau deteriorat
Nu utilizați produsul dacă materialul de izolare este deteriorat
Nu amplasați lângă surse de căldură mai mult de 60°C
Nu scufundați în apă, cu excepția BOBBY C40, C50, C60 și LIBERTY
Nu țineți la îndemâna copiilor
Nu depășiți tensiunea autorizată
Păstrați aceste instrucțiuni de utilizare pentru o utilizare ulterioară
Tensiunea produselor: 220 V - 240 V; frecvența: 50/60 Hz

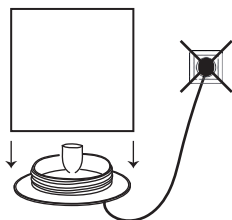
SIEGE SOCIAL / HEAD QUARTERS :
BATIMEX Lumisky
19 Rue Saint Eloi,
13010 MARSEILLE
FRANCE

Service après-vente /
After sales service : sav@batimex-import.fr

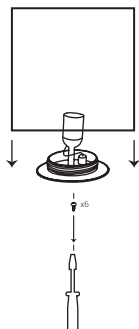
BOBBY W40/50/60
CARRY W40



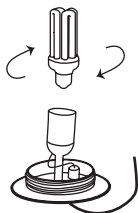
1



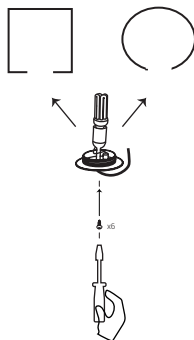
2



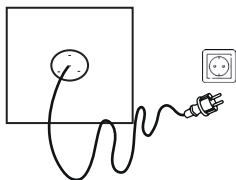
3



4

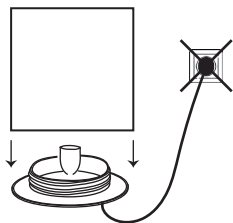


5

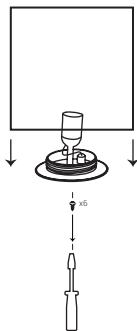




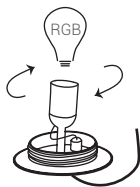
1



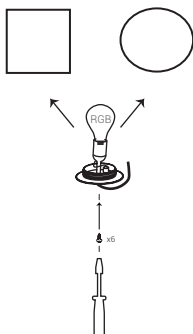
2



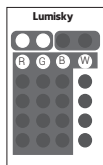
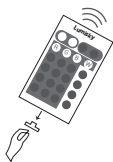
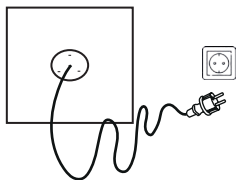
3



4

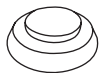
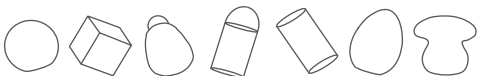


5



FLASH = R G B R G B R G B R G B R G B
STROBE = R R R (W) G G G (W) B B B (W) R R R
FADE = R R R (W) G G G (W) B B B (W) R R R
SMOOTH = R R R G G G R R R R R R G G G R R R

BOBBY C30/40/50/60/ CARRY C20/30/40
 LIBERTY/JOY
 EASY C23/C36/C42
 ALTY C24/ FUNNY C20

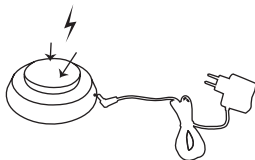


1

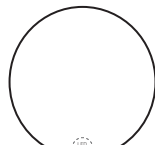
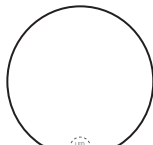
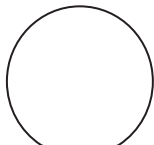
+



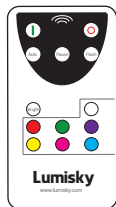
2



3

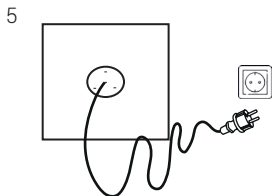
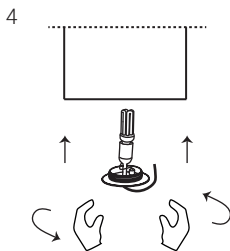
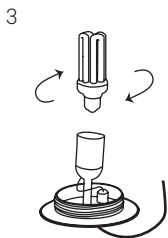
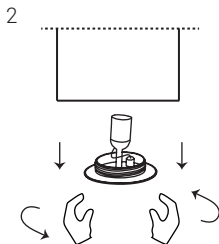
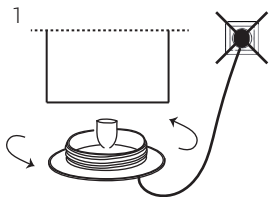


On/Off
 Color change
 Brightness



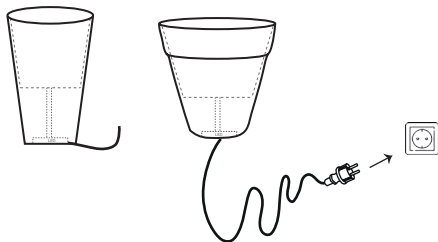
- On
- Off
- R G B R G B R G B R
- Volume
- select color
- Signal strength

CLASSY W120/ALTY W38/70
JAZZY W72/EASYW68
STONY W20

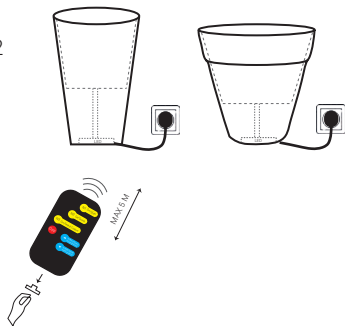




1



2



On /

On /

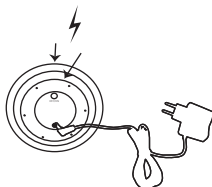
On / choose color

Mode N1&N2 + →



Mode N3 + →



+



1

 X 1 = ON X 2 =  X 3 = OFF

2

rouge
redvert
green

6H



LUCY PLAY

4



Lumisky Lucy Play → CONNECT ☺)



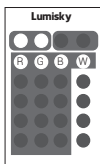
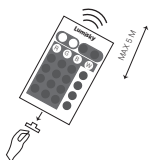
5



6

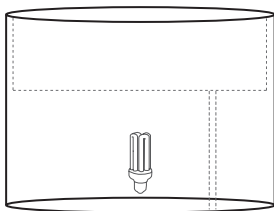
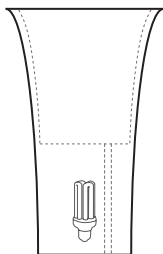
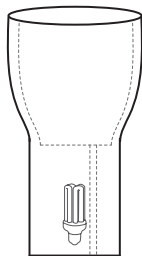
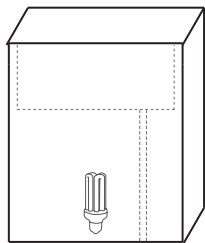
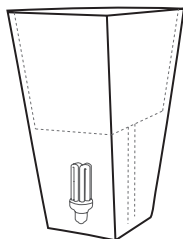
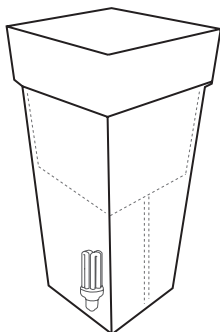
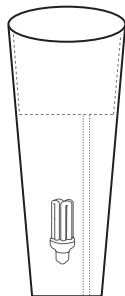


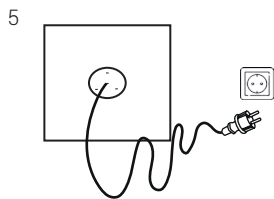
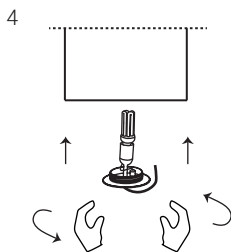
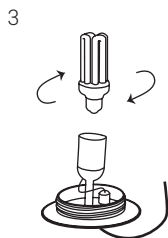
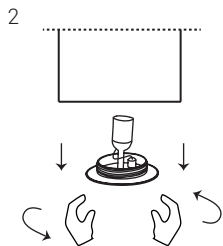
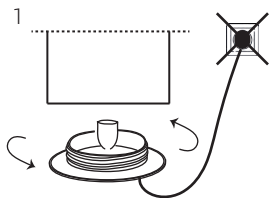
8H



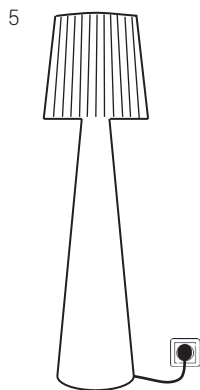
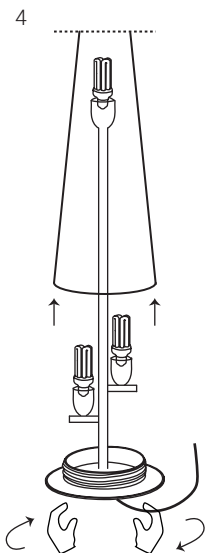
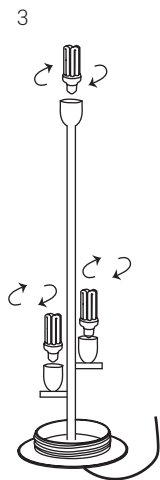
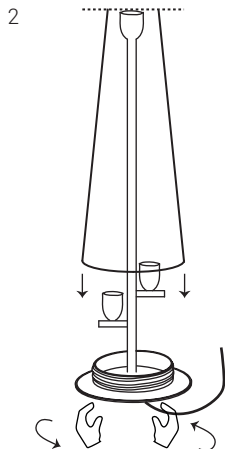
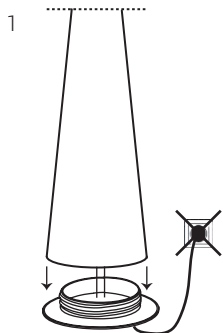
FLASH = R G R R G R R G R R G R R G R R G R
 STROBE = R R R (W) G G G (W) B B B (W) B B B
 FADE = R R R (W) G G G (W) B B B (W) R R R
 SMOOTH = R R R G G G B B B R R R G G G R R R

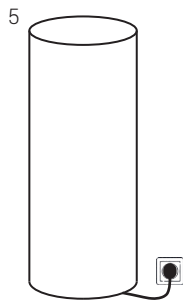
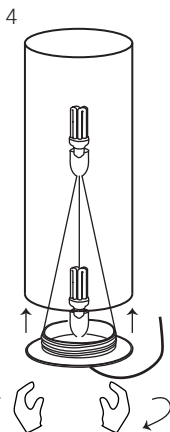
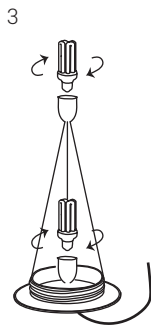
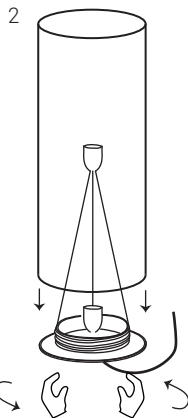
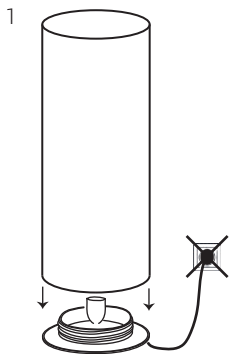
COSMY W90/LOBBY W105/70
DINY W70/FLORY W60/85/
DANDY W85/OVYW60

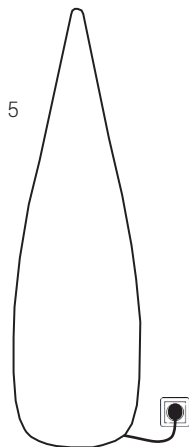
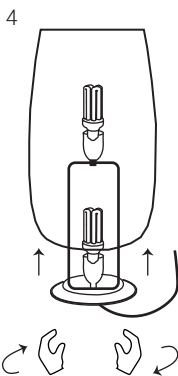
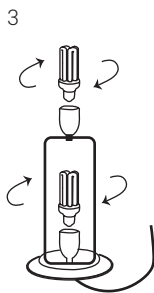
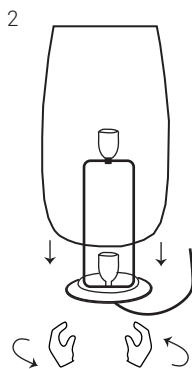
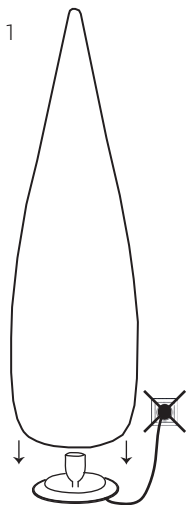




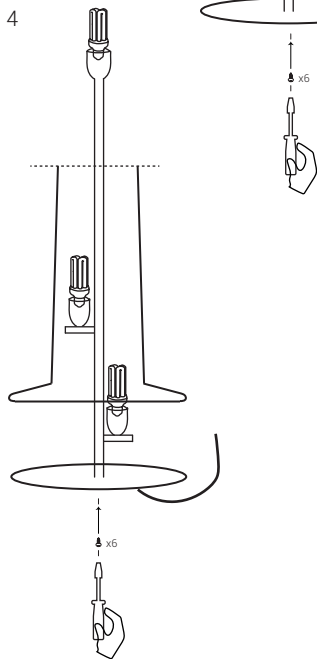
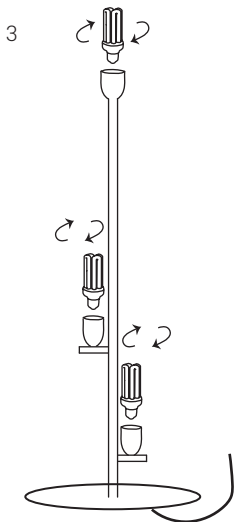
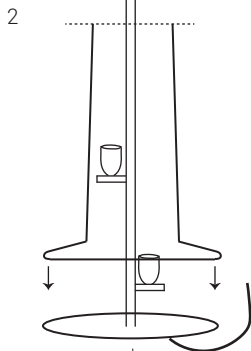
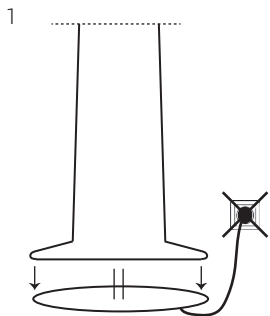
LADY W150



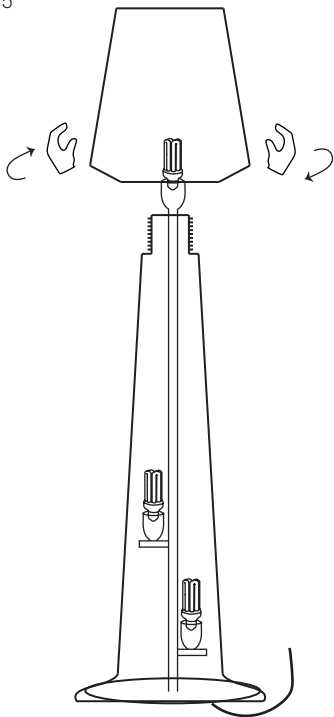




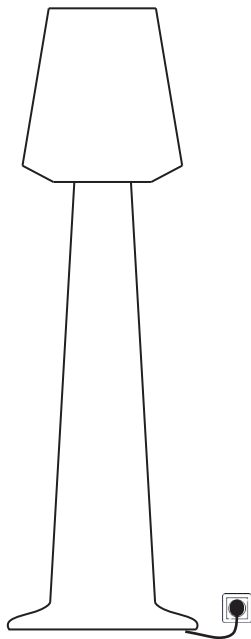
AUSTRAL



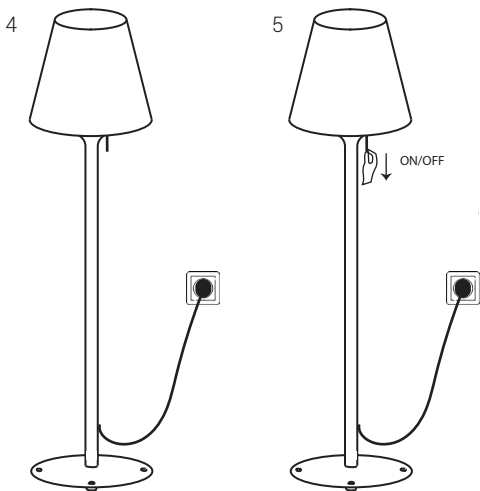
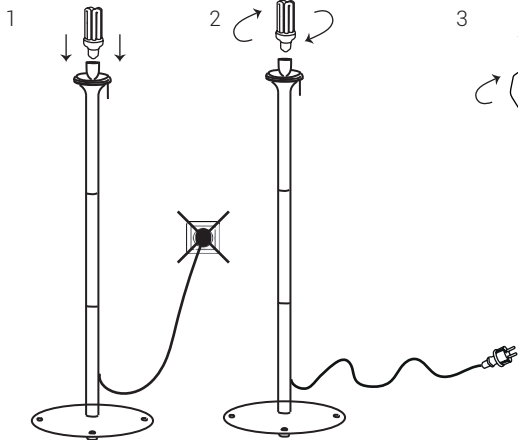
5



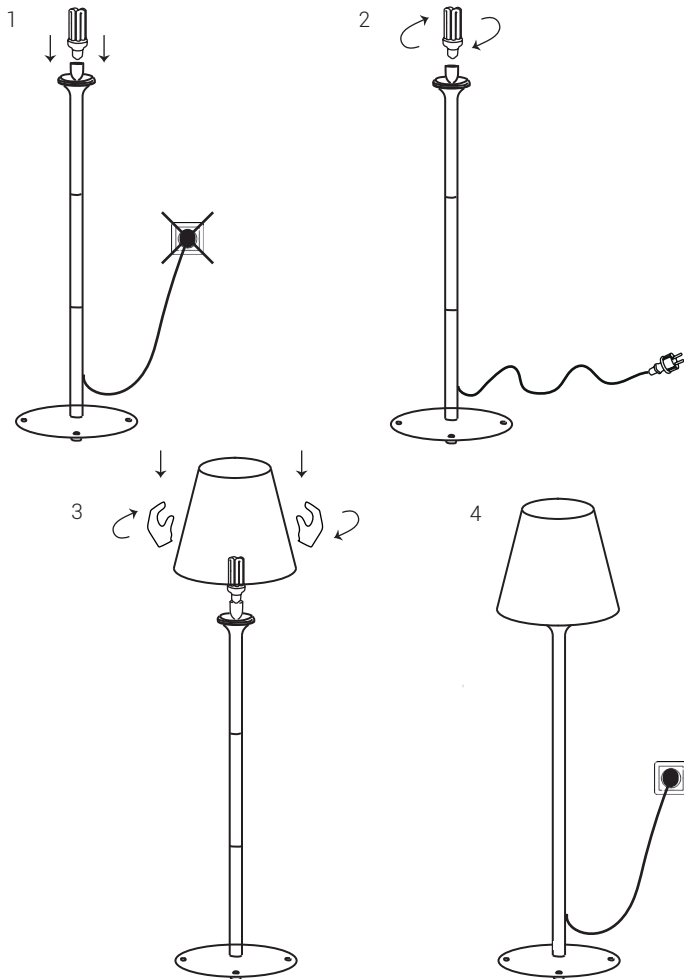
6



STANDY W180

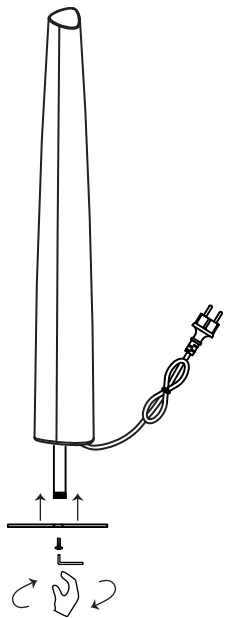


STANDY W52/W150
GLEJ W145

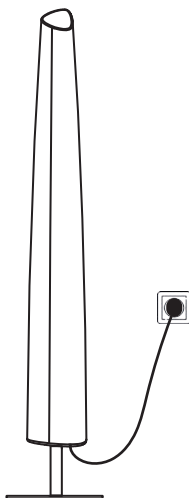


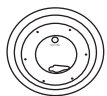


1

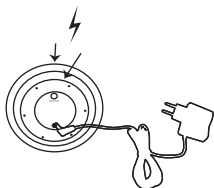


2

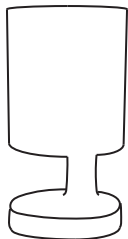




+

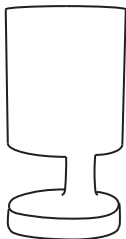


1

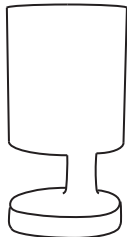


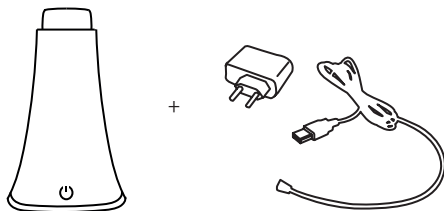
- X 1 = ON
- X 2 =
- X 3 = OFF

2

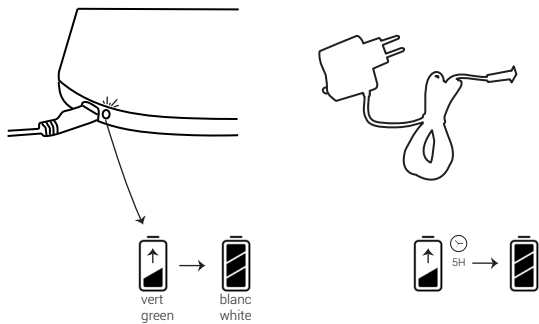


3

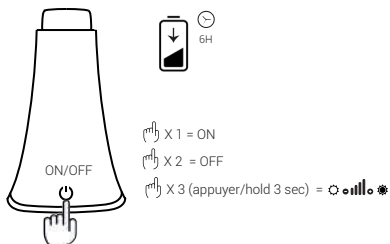




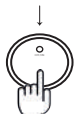
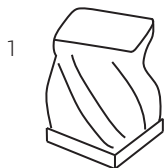
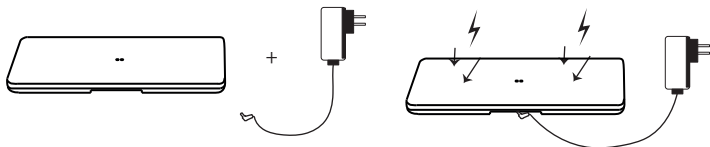
1



2

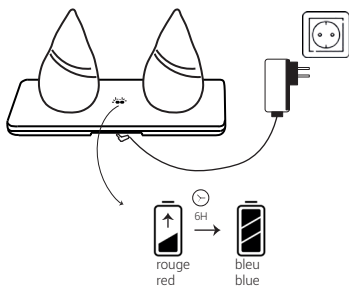


TWISTY C12/ICY C12/KUBY C12
FIRY C14/BALY C19



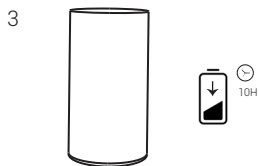
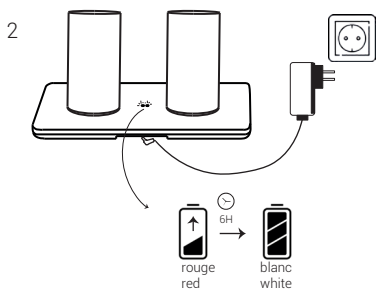
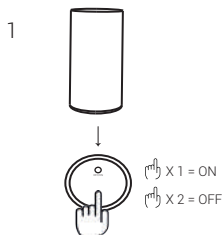
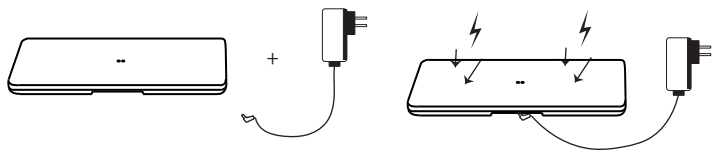
- X 1 = ON + Rouge/Red
- X 2 = Vert/Green
- X 3 = Bleu/Blue
- X 4 = Blanc/White
- X 5 = Jaune/Yellow
- X 6 = **R G B R G B R G B**
- X 7 = Bleu/Blue
- X 8 = **R B B G G B B R B G G B B**
- X 9 = Rose/Pink
- X 10 = OFF

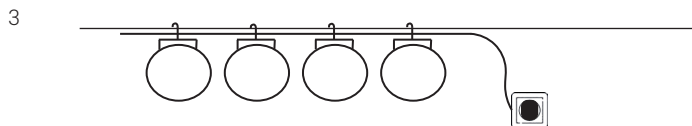
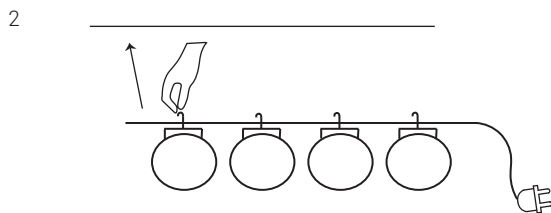
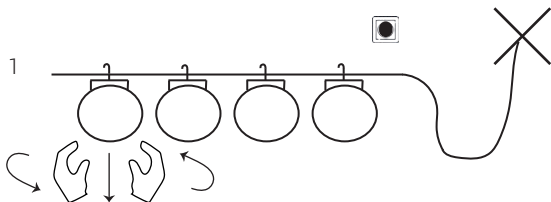
2



3



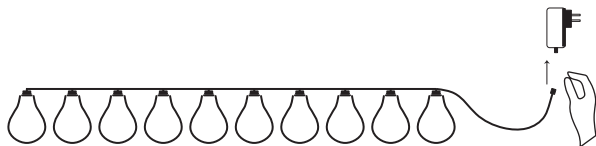




FANTASY C10/
FANTASY WARM/COLD



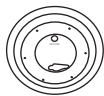
1



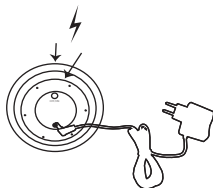
2



ZINGY C52/ YUPPY C35



+



1

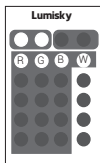
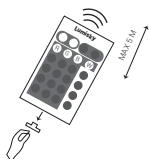


- X 1 = ON
- X 2 =
- X 3 = OFF

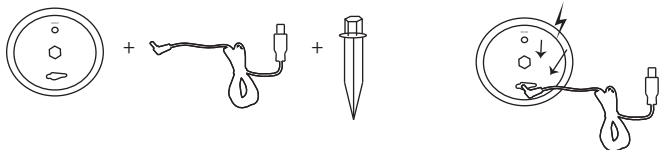
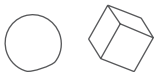
2



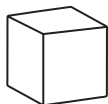
3



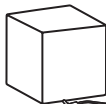
- FLASH = R G B R G B R G B R G B R G B
- STROBE = B B B (W) G G G (W) B B B (W) B B B
- FADE = B B B (W) G G G (W) B B B (W) B B B
- SMOOTH = B B B G G G B B B R R R G G G B B B



1



OU/OR



CHGR2

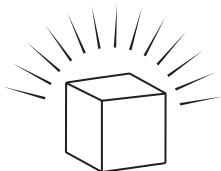


10H



5H

2



3



8H



X 1 = ON + Rouge/Red

X 2 = Vert/Green

X 3 = Bleu/Blue

X 4 = Jaune/Yellow

X 5 = Azur/Azure

X 6 = Violet/Violet

X 7 = Blanc/White

X 8 = RR GG BB RR GG BB

X 9 = OFF

THANK YOU		GRACIAS
OBRIGADO	MERCI	KÖSZÖNET
БЛАГОДАРЕНИЕ		БЛАГОДАРНОСТЬ
TEŞEKKÜRLER		MULTUMESC
ΕΥΧΑΡΙΣΤΩ		PALDIES
BEDANKT		ПОДЯКА
GRAZIE		HVALA
TAK		DZIĘKI
TACK		AČIŪ
DANK		GRAZZI
KIITOS		DÍKY
VĎAKA		MERSI
TÄNU		MIHI
ارکش	הודות	
धन्यवाद		

lumisky

